

## MODÜLER YÜK TUTMA VALFİ / MODULAR COUNTER BALANCE VALVES MSC - 02



### TEKNİK ÖZELLİKLER / TECHNICAL DATA

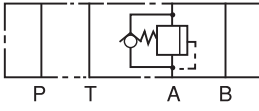
MAKSİMUM ÇALIŞMA BASINCI  
MAX. OPERATING PRESSURE:  
250 KGF/CM<sup>2</sup> (3600 PSI)

MAKSİMUM DEBİ / MAX. FLOW:  
40 LPM (10.6 GPM)

AĞIRLIK / WEIGHT:  
1.3 KGS

### SEMBOLLER / SYMBOLS

#### MSC - 02A



#### MSC - 02B



### SİPARİŞ KODU / ORDERING CODE

MSC -- 02 -- A -- K -- 1 -- 50

DİZAYN NUMARASI / DESIGN NUMBER

BASINÇ AYAR ARALIKLARI / PRESSURE ADJUSTING RANGE

1: 8-70 KGF/CM<sup>2</sup> (120-1000 PSI)

2: 35-140 KGF/CM<sup>2</sup> (500-2000 PSI)

BASINÇ AYARLAYICI KOL TİPİ / ADJUSTING ARM TYPE:

K: EL TOPUZLU İLE / WITH HAND KNOB

KOD YOKSA - ALLEN AYARLI / NO CODE - WITHOUT HAND KNOB:

İŞ YAPACAK DELİKLER / FUNCTION PORT

A: A DELİĞİ / A PORT

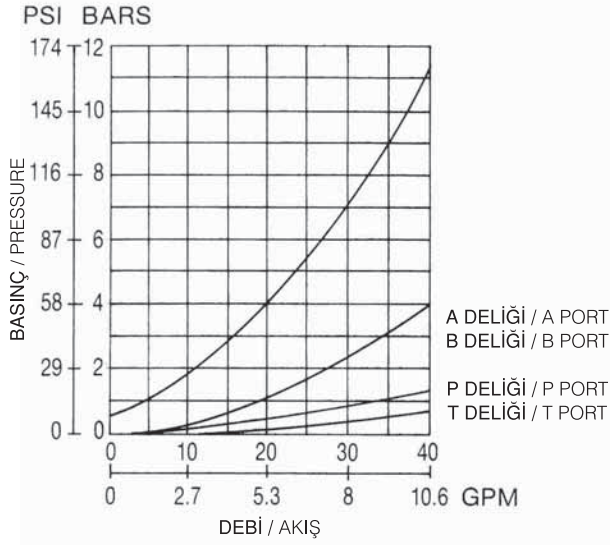
B: B DELİĞİ / B PORT

DELİK ÖLÇÜSÜ / PORT SIZE

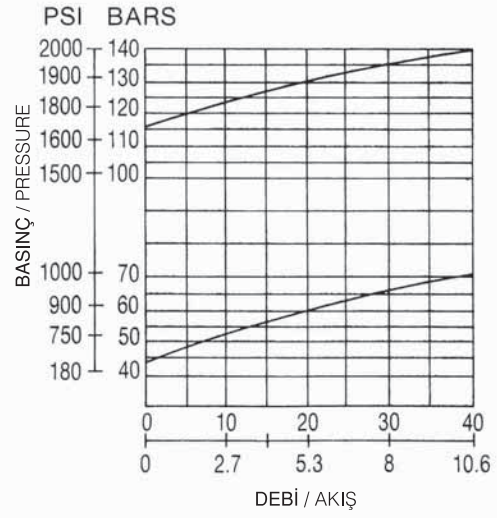
02: 1/4"

## MSC - 02 SERİLERİ / MSC - 02 SERIES

## ÇALIŞMA EĞRİLERİ / PERFORMANCE CURVES

YAĞ ÇALIŞMA ÖLÇÜSÜ V= 35 CST VE T= 50°C  
MEASURED AT V= 35 CST VE T= 50°CBASINÇ DÜŞÜŞÜ  
PRESSURE DROP

## NOMINAL OVERRIDE CHARACTERISTICS



## ÖLÇÜLER / DIMENSIONS

BİRİM / UNIT: MM(INCH)  
AĞIRLIK / WEIGHT: 1.3 KGS